



STYLISH NEW FAMILY HOME

28 Infinity Drive, Peninsula Bay, Lake Wanaka
Lot 202

4 

2 

2 

Settle your family into this large, brand new home with four double bedrooms, two bathrooms, two living areas with an extra large dining/living area.

Built by Mike Greer Homes, this home offers spacious, open plan living on a 1074m² section with excellent outdoor flow. Designed with a north westerly aspect, this family home will enjoy all day sun.

7 year master build guarantee.

A few minutes walk to community facilities* including swimming pool, spa, BBQ area, gym, and clubroom.

*Small membership fee applies

FOR SALE
\$695,000

For more information contact
Patrick Waser 0274 422 756,
03 443 0087

or any Wanaka real estate agent

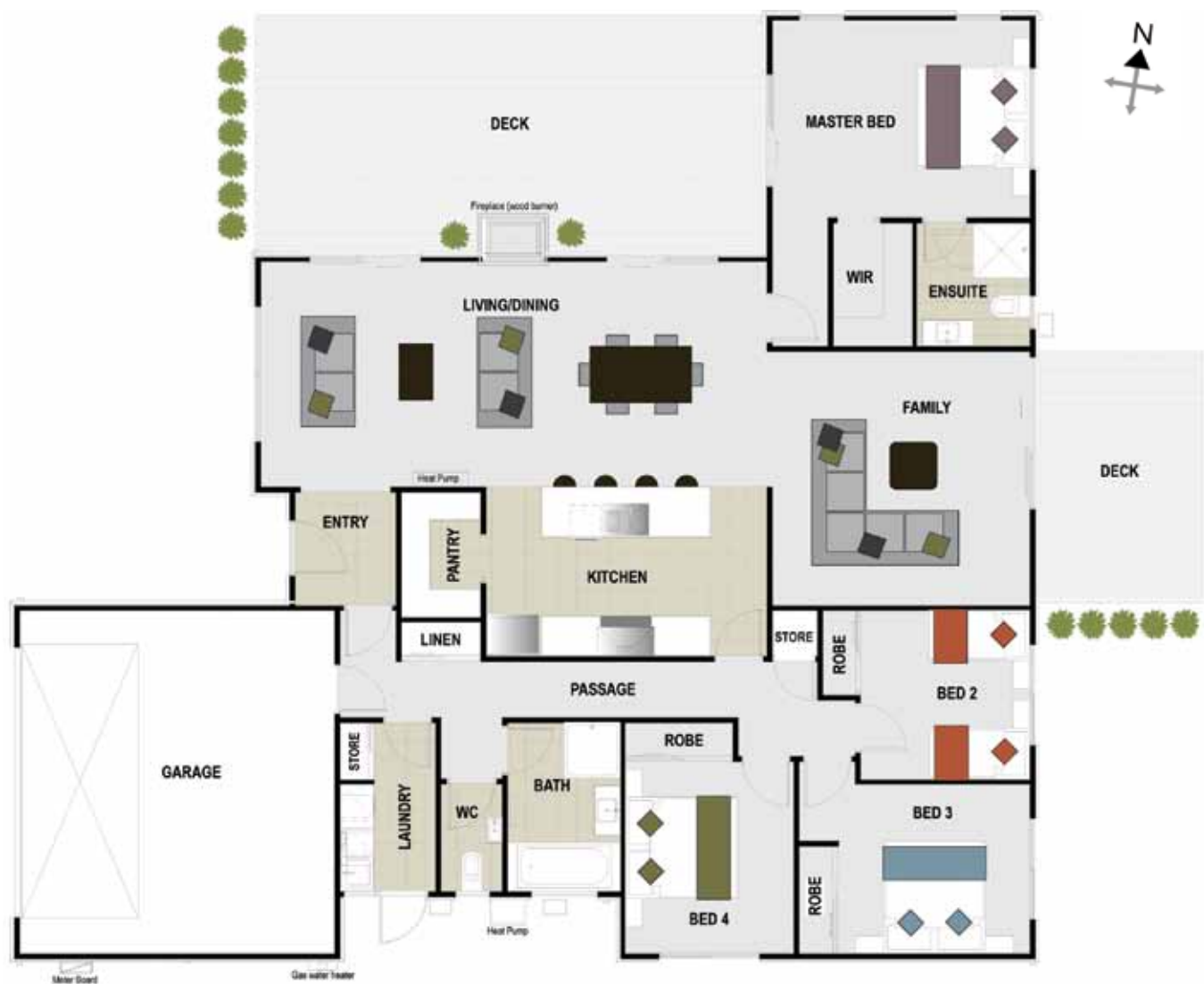
www.peninsulabay.co.nz/homes

INFINITY
INVESTMENT GROUP

STYLISH NEW FAMILY HOME

28 Infinity Drive, Peninsula Bay, Lake Wanaka
Lot 202

Legal description: Lot 202 DP 442315	Bedroom 1: Walk in wardrobe, ensuite	Garaging: Double
C/T number: 568577	Bedroom 2: Double internal wardrobe	Separate laundry: One
Rateable land value: \$310,000	Bedroom 3: Double internal wardrobe	Chattels: 1 x heat pump, stove (Westing House), range hood (Asco), dishwasher (Westing House), carpet, fireplace (wood burner), auto garage door with two remote controls.
Rates: Approx. \$1,800 p/a	Bedroom 4: Double internal wardrobe	Other: Connected to reticulated natural gas and super fast broadband (fibre optic cabling)
Home size: 214m ²	Bathrooms: Two	
Land area: 1074m ²	Toilets: Two	



Floor plan and deck are not to scale and are indicative only.

For more information contact **Patrick Waser** 0274 422 756
or any Wanaka real estate agent